



## 17 University Avenue Canberra ACT

Designed by Syzygy and rising thirteen storeys above the corner of University Avenue and Marcus Clarke Street, MAVEN is a boutique collection of just 89 outward-facing residences at the most rapidly evolving address in Canberra's western city centre.

The mix has been carefully curated for the way the capital's professionals, academics and downsizers actually live - spacious one-bedroom apartments, one-bedroom-plus-flexi-room layouts, generous two-bedroom configurations (including two-bedroom-plus-nook designs), expansive three-bedroom residences and, crowning the building, three signature Sky Terraces. Every apartment looks outward, leveraging coveted aspects including North,

**Type** : Apartment

**Price** : \$589,900-\$1,999,900

**View** : <https://www.aboveproperty.com.au/8685474>

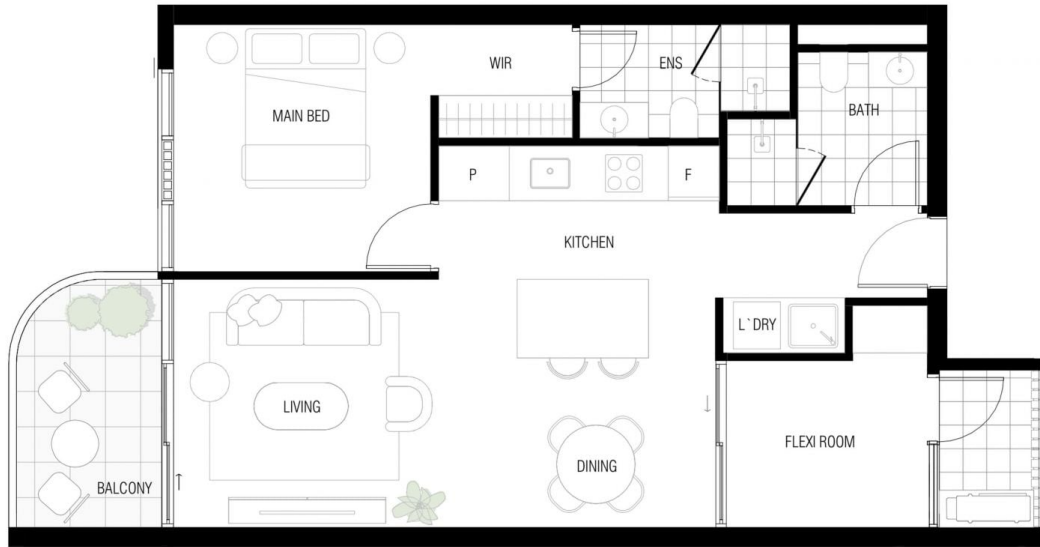


**Matt Nicholls**  
0407 328 269



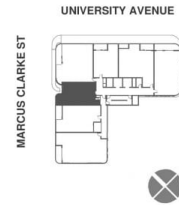
**Joy Cui**  
02 6280 9858

[For full version visit the website](https://www.aboveproperty.com.au)



### UNIT TYPE 1F.1

INTERNAL 67 m<sup>2</sup>  
 EXTERNAL 8 m<sup>2</sup>  
 TOTAL AREA 75 m<sup>2</sup>

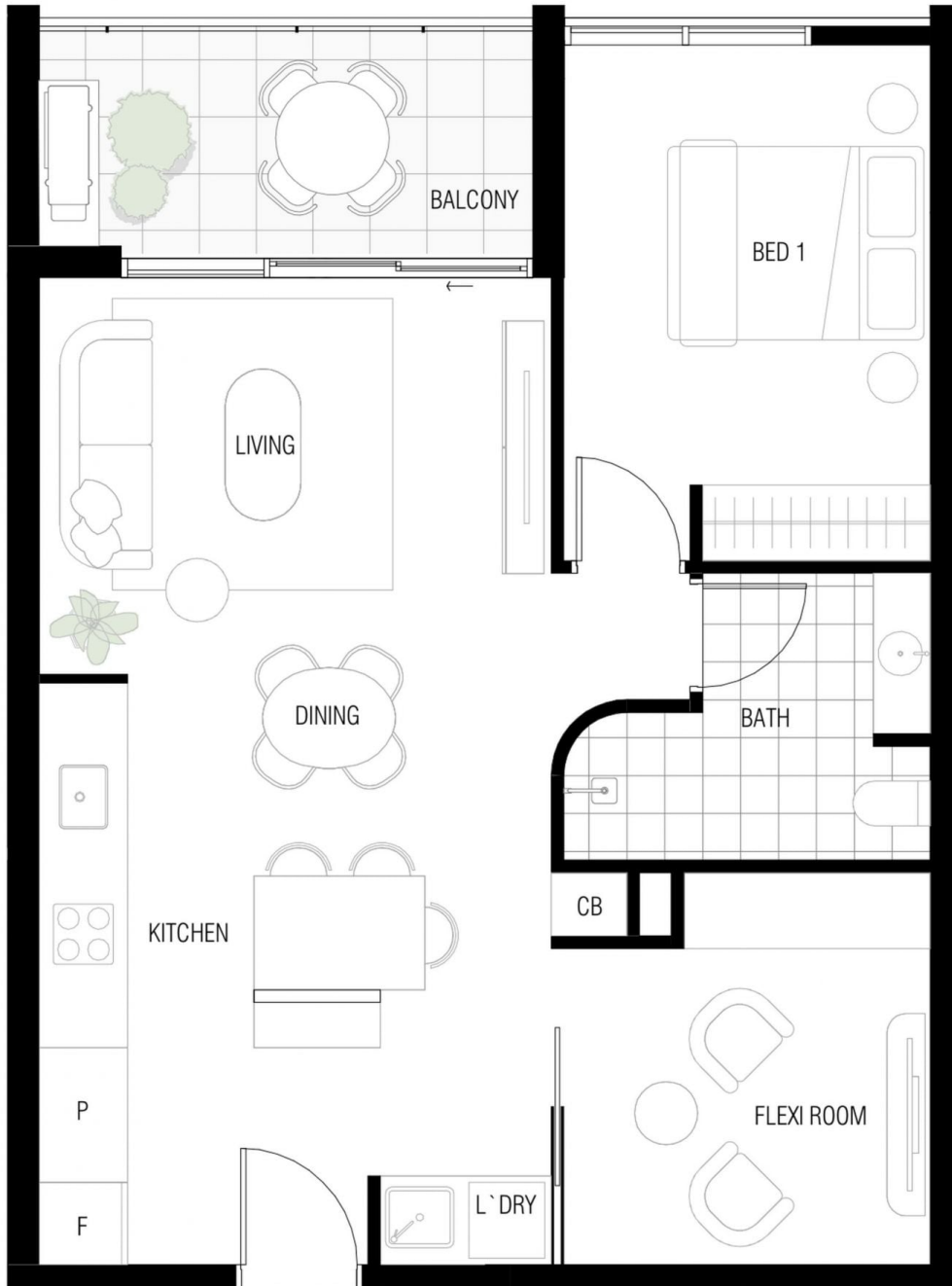


F | FRIDGE    P | PANTRY    CB | CABINET    WP | WALK-IN PANTRY    L'DRY | LAUNDRY    L | LINEN  
 ST | STORAGE    SH | SHELVING    SN | STUDY NOOK    WIR | WALK-IN ROBE    WC | WATER CLOSET    BT | BUTLERS

MAVEN

# MAVEN

# TYPE 1BS

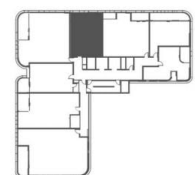


## UNIT TYPE 1BS

INTERNAL 65 m<sup>2</sup>  
 EXTERNAL 8 m<sup>2</sup>  
 TOTAL AREA 73 m<sup>2</sup>

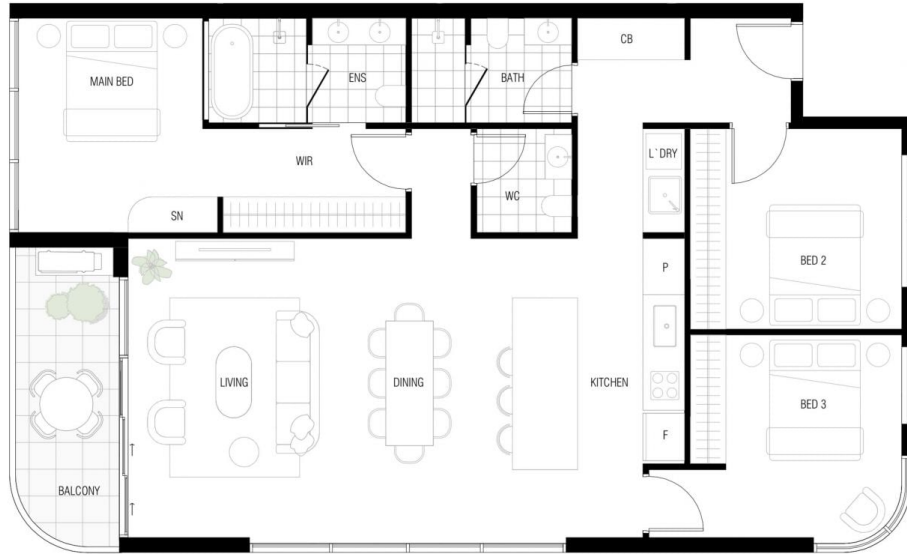
UNIVERSITY AVENUE

MARCUS CLARKE ST



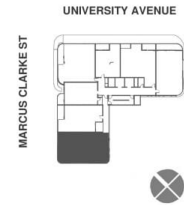
F | FRIDGE    P | PANTRY    CB | CABINET    WIP | WALK-IN PANTRY    L'DRY | LAUNDRY    L | LINEN  
 ST | STORAGE    SH | SHELVING    SN | STUDY NOOK    WIR | WALK-IN ROBE    WC | WATER CLOSET    BT | BUTLERS

MAVEN



### UNIT TYPE 3C.1

INTERNAL 126 m<sup>2</sup>  
 EXTERNAL 9 m<sup>2</sup>  
 TOTAL AREA 135 m<sup>2</sup>

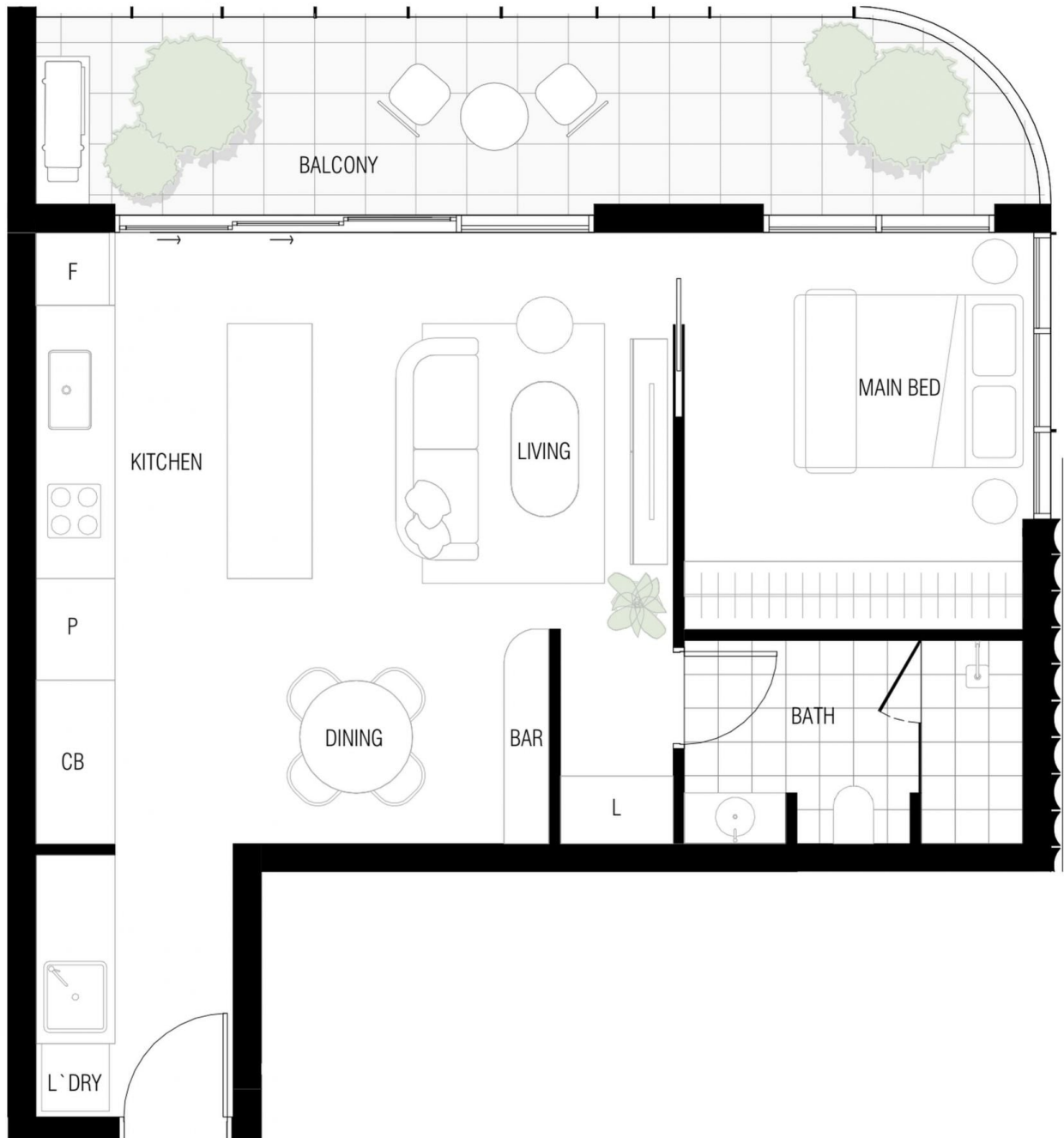


F   FRIDGE	P   PANTRY	CB   CABINET	WIP   WALK-IN PANTRY	L'DRY   LAUNDRY	L   LINEN	OPTION
ST   STORAGE	SH   SHELVING	SN   STUDY NOOK	WIR   WALK-IN ROBE	WC   WATER CLOSET	BT   BUTLERS	WIP   L'DRY
						WC

MAVEN

# MAVEN

# TYPE 1D

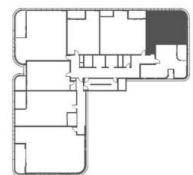


## UNIT TYPE 1D

INTERNAL 57 m<sup>2</sup>  
 EXTERNAL 17 m<sup>2</sup>  
 TOTAL AREA 74 m<sup>2</sup>

UNIVERSITY AVENUE

MARCUS CLARKE ST



F | FRIDGE    P | PANTRY    CB | CABINET    WIP | WALK-IN PANTRY    L' DRY | LAUNDRY    L | LINEN  
 ST | STORAGE    SH | SHELVING    SN | STUDY NOOK    WIR | WALK-IN ROBE    WC | WATER CLOSET    BT | BUTLERS

MAVEN

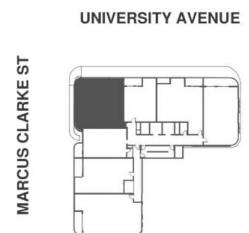
# MAVEN

# TYPE 2E.1



## UNIT TYPE 2E.1

INTERNAL 115 m<sup>2</sup>  
 EXTERNAL 10 m<sup>2</sup>  
 TOTAL AREA 125 m<sup>2</sup>



F | FRIDGE    P | PANTRY    CB | CABINET    WIP | WALK-IN PANTRY    L'DRY | LAUNDRY    L | LINEN  
 ST | STORAGE    SH | SHELVING    SN | STUDY NOOK    WIR | WALK-IN ROBE    WC | WATER CLOSET    BT | BUTLERS

MAVEN