



5/2 Jackonia Street Whitlam ACT

3  2  2 

Welcome to this beautifully presented home in the sought-after suburb of Whitlam. Designed for comfort and easy living, this modern residence offers a perfect balance of space, functionality, and contemporary style-ideal for families or professionals alike.

Type : Townhouse

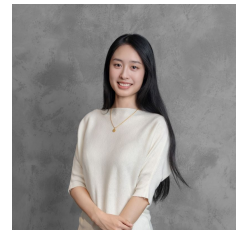
Price : \$800 pw

View : <https://www.aboveproperty.com.au/8684210>

Step inside to discover a light-filled open-plan living and dining area, complemented by a well-appointed kitchen featuring quality appliances and ample storage. The seamless indoor-outdoor flow makes entertaining a breeze, while the thoughtfully designed layout ensures privacy and comfort for all.



Zoe Lee
0494 096 629



Zoe Xu
0408 998 995

[For full version visit the website](https://www.aboveproperty.com.au)