



### 7/2 Maggie Scott Terrace Whitlam ACT

3  2  2 

Positioned in the heart of Whitlam, 7/2 Maggie Scott Terrace offers a smart blend of modern design and practical living. This well-appointed residence is ideal for families, professionals, or investors seeking a low-maintenance home in a growing community.

Featuring three comfortable bedrooms and two modern bathrooms, the layout is designed for both privacy and everyday ease. The open-plan living and dining area is light-filled and welcoming, flowing seamlessly into the kitchen to create a functional space for relaxing or entertaining. Two secure car spaces add to the convenience and appeal.

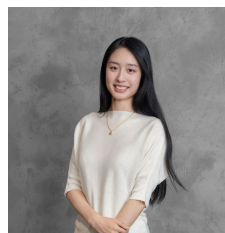
Enjoy a peaceful lifestyle with easy access to local parks,

[For full version visit the website](https://www.aboveproperty.com.au/8600275)

**Type** : Townhouse

**Price** : \$750 pw

**View** : <https://www.aboveproperty.com.au/8600275>



**Zoe Xu**  
0408 998 995