



58/4 Pearlman Street Coombs ACT

3  2  4 

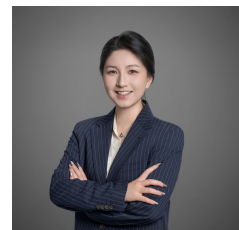
Discover the perfect blend of modern comfort and thoughtful design in this large, 3-bedroom tri-level townhouse in the Ashi complex, Coombs. Built on a wide grid and nestled in the serene Molonglo Valley, this home boasts a light-filled north-facing aspect and extensive custom joinery, providing abundant storage solutions throughout.

The lower level features an expansive open-plan living and dining area that flows onto a generous balcony, ideal for enjoying the sunshine and fresh air. The sleek, modern kitchen includes a dishwasher, ample bench space, and additional storage for effortless functionality. This level also houses two bedrooms, a well-appointed powder room, and extensive built-in joinery for added convenience.

Type : Townhouse
Price : \$ 835,000
Building Size : 245 sqm
View : <https://www.aboveproperty.com.au/8204899>

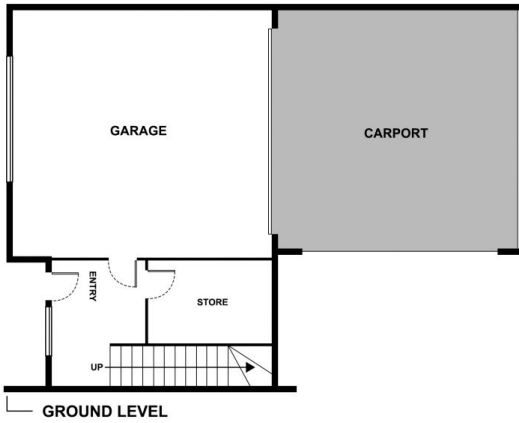
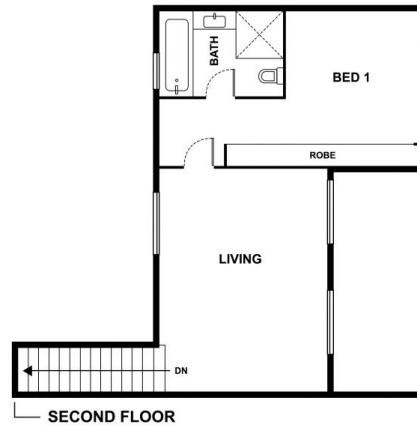


Matt Nicholls
02 5134 3942



Nicole Xiang
02 5134 3942

[For full version visit the website](https://www.aboveproperty.com.au)



58/4 Pearlman Street, Coombs ACT 2611

DISCLAIMER: Please be advised that the floorplan provided may be inaccurate and is solely approximate. It is important to note that the dimensions and proportions depicted are not to scale. Any reliance on the floorplan for precise measurements or spatial representation should be exercised with caution. We recom-