



47/15 John Cleland Crescent Florey ACT

3  2  2 

Welcome to this delightful corner townhouse at 47/15 John Cleland Crescent, Florey. This bright and spacious 3-bedroom home offers an exceptional combination of privacy, space, and modern living, making it the perfect choice for families, first-time buyers, or investors seeking low-maintenance living with extra room to move.

The generous open-plan living and dining areas are designed to capture an abundance of natural light, thanks to the townhouse's sought-after corner position. This enhances the feeling of space and airiness, creating an inviting atmosphere for both relaxing and entertaining. The contemporary kitchen features quality appliances, ample storage, and a practical layout, ideal for both casual meals and more elaborate cooking.

Type : Townhouse
Price : \$ 681,000
Building Size : 131 sqm
View : <https://www.aboveproperty.com.au/8181517>

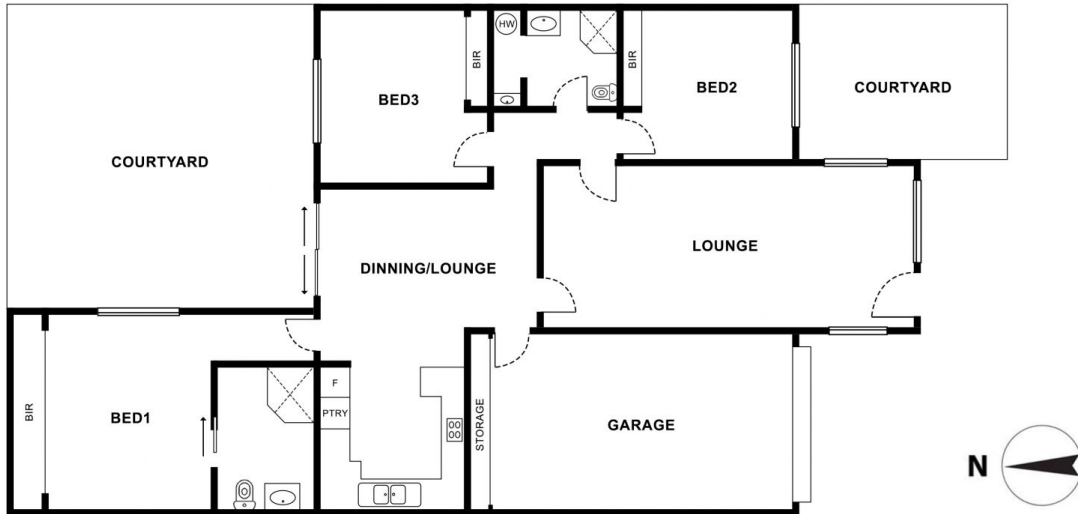


Radhey Arora
02 6280 9858



Joy Cui
02 6280 9858

[For full version visit the website](https://www.aboveproperty.com.au)



47/15 John Cleland Cres, Florey ACT 2615

DISCLAIMER: Please be advised that the floorplan provided may be inaccurate and is solely approximate. It is important to note that the dimensions and proportions depicted are not to scale. Any reliance on the floorplan for precise measurements or spatial representation should be exercised with caution. We recommend verifying all dimensions and layout details independently to ensure accuracy.