



2505/120 Eastern Valley Way Belconnen ACT

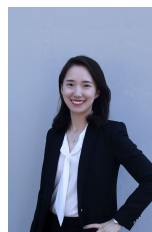
1  1  1 

Situated within the renowned WAYFARER apartments in Belconnen, this remarkable one-bedroom apartment on the 25th floor offers an unparalleled living experience. With its north-facing orientation, it enjoys abundant natural light and breathtaking views of Lake Ginninderra. The apartment features a functional floorplan, complemented by high-quality Electrolux appliances, floor-to-ceiling double-glazed windows, and ample storage, including a basement car space.

Residents can enjoy exclusive access to a range of amenities including a swimming pool and a common function room.

Located close to Canberra's inaugural mixed-use precinct, residents of this apartment enjoy unparalleled convenience with Woolworths Metro, BWS, Abode Hotel, and an array of

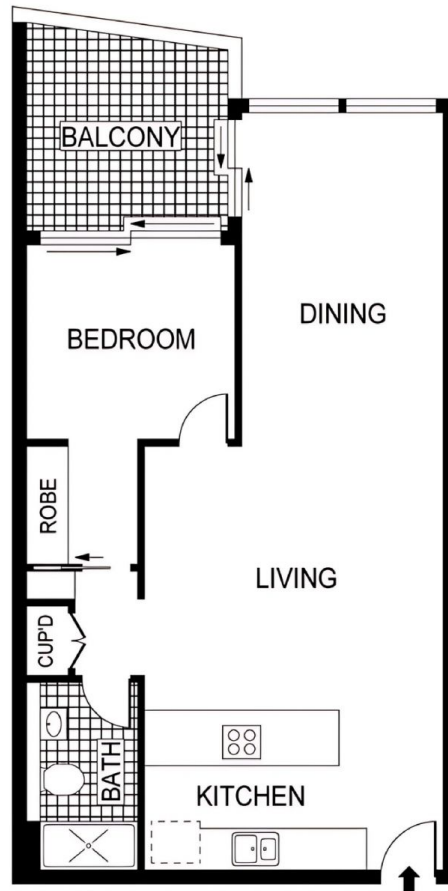
Price : \$479,900+
Building Size : 73 sqm
View : <https://www.aboveproperty.com.au/8049619>



Joy Cui
02 5134 3942



Radhey Arora
0421 430 007



Internal Area: 64 sqm

Balcony area: 9 sqm

2505/120 Eastern Valley Way, Belconnen, ACT 2617

DISCLAIMER: Please be advised that the floorplan provided may be inaccurate and is solely approximate. It is important to note that the dimensions and proportions depicted are not to scale. Any reliance on the floorplan for precise measurements or spatial representation should be exercised with caution. We recommend verifying all dimensions and layout details independently to ensure accuracy.