

60/2 Eardley Street Bruce ACT

3  2  2 

Please follow this link to APPLY NOW:

https://apply.sortedservices.com/#!/properties?id=6923765e-3d4d-42f8-870c-ad952badf3ff&type=t&agencyCode=AU_ABPG

Price : \$630 pw

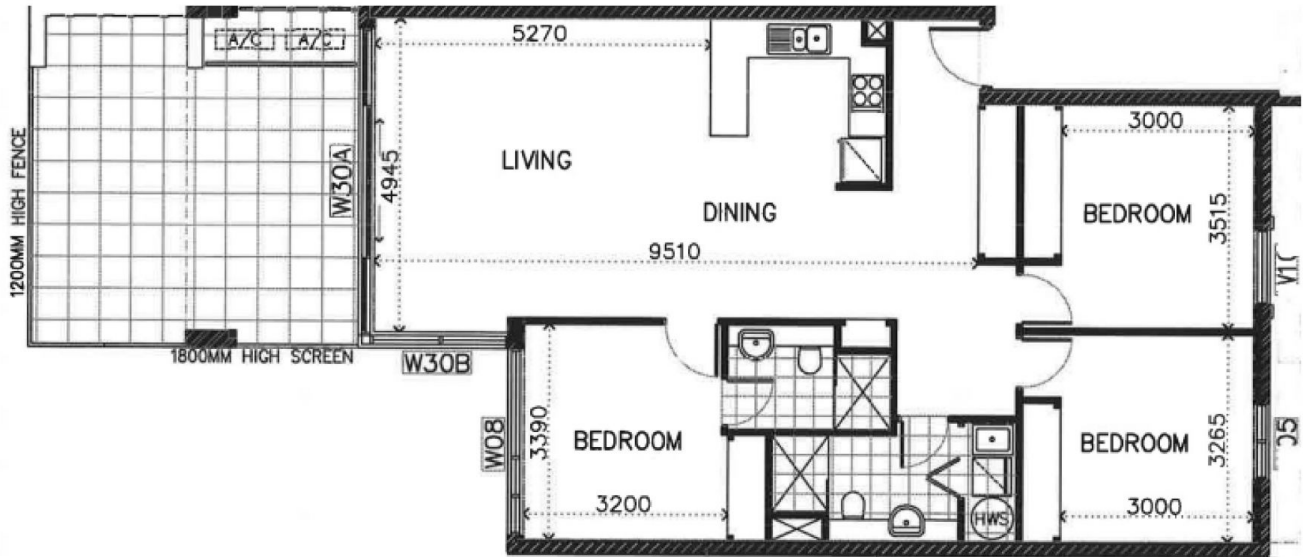
View : <https://www.aboveproperty.com.au/7983466>

Immerse yourself in the sophistication of this exquisitely crafted 3-bedroom, 2-bathroom apartment nestled within the sought-after 'Elara' complex. Perfectly positioned with a north-facing aspect, it welcomes the gentle embrace of the morning sun, infusing the space with warmth and charm.

Step inside to discover a spacious living area that seamlessly merges an open-plan lounge and dining area, flowing effortlessly onto the expansive courtyard bathed in eastern light. The contemporary kitchen is a chef's dream, boasting a sizable island bench, elegant stone countertops, dishwasher, and ample storage for effortless organization.



Jenny Wang
02 5134 3942



60/10 Thynne Street, Bruce, ACT 2617

Internal Area: 108 sqm

Balcony area: 28 sqm

DISCLAIMER: Please be advised that the floorplan provided may be inaccurate and is solely approximate. It is important to note that the dimensions and proportions depicted are not to scale. Any reliance on the floorplan for precise measurements or spatial representation should be exercised with caution. We recommend verifying all dimensions and layout details independently to ensure accuracy.