



## 6/49 Hampton Circuit Yarralumla ACT

2  2  2 

Experience the epitome of Inner South living in prestigious Yarralumla with this captivating double-storey walk-up apartment. Situated across from lush parklands and just a short drive from Yarralumla and Deakin shops, as well as the vibrant cafes and restaurants of Manuka and Kingston, this residence offers unparalleled convenience and lifestyle.

Nestled within the boutique "Aarne" complex of only 11 apartments, this home boasts unique architecture highlighted by floor-to-ceiling double-glazed windows that flood the space with natural light. An elegant entry featuring a double height void giving a real sense of space. The ground floor hosts the expansive living area, encompassing the lounge, dining space, galley-style kitchen, powder room, and laundry facilities. Glass sliding doors seamlessly connect to the private front, side, and rear low-maintenance

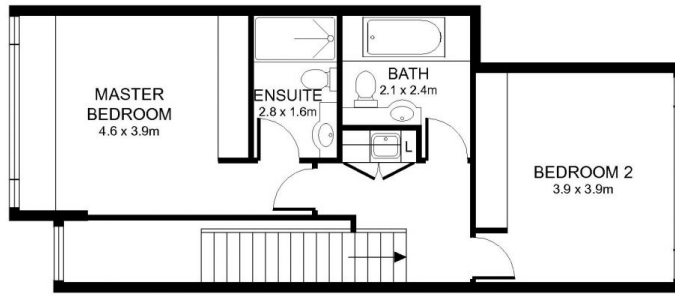
**Price** : \$799,900+  
**Building Size** : 179 sqm  
**View** : <https://www.aboveproperty.com.au/7948619>



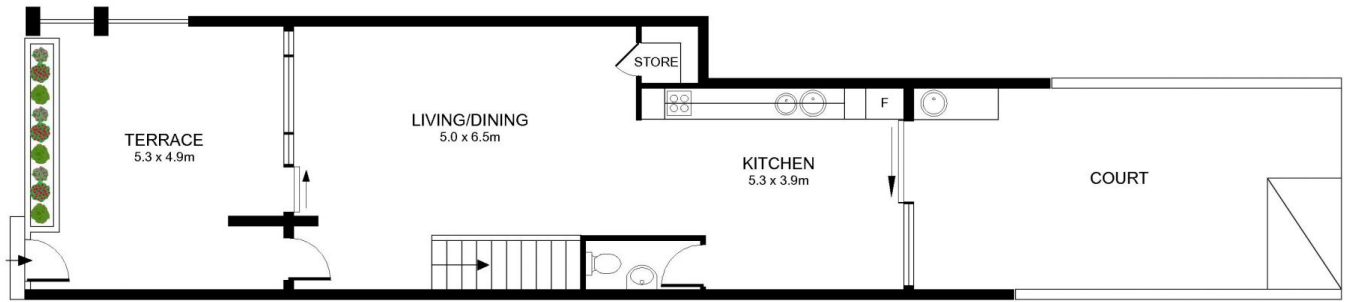
**Matt Nicholls**  
02 5134 3942



**Oumaya Escribe**  
02 5134 3942



FIRST FLOOR



GROUND FLOOR

**6/49 Hampton Circuit, Yarralumla6**



Total Area: 179 m<sup>2</sup>

DISCLAIMER: PLAN SHOWN ARE FOR MARKETING PURPOSES ONLY, ALL DIMENSIONS ARE APPROXIMATE AND NOT TO SCALE. THEY ARE SUBJECT TO ERRORS AND INACCURACIES AND NO LIABILITY WILL BE ACCEPTED. INTERESTED PARTIES SHOULD MAKE THEIR OWN INQUIRES

**YAO** **STUDIO**