



**5/ Corner Of Hazel Hawke Avenue And Bousloff St  
Whitlam ACT**

**3**  **2**  **2** 

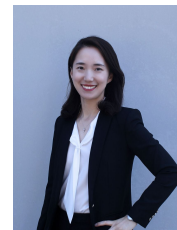
Introducing Moment Townhouses in Whitlam, Canberra's latest residential gem, where lifestyle meets luxury. Just a 10-minute drive from the city center, and conveniently near Woden and Belconnen town centres, these two and three-bedroom homes redefine modern living. Set in a prime location across from the upcoming town centre, Moment townhouses boast a unique design that blends urban elegance with an Alpine aesthetic, accentuated by contrasting façades and distinctive rooflines.

Nestled in a location that's both close to the city and surrounded by nature reserves, each townhouse offers a private garden and terraces perfect for outdoor living, with living areas that open up to a desirable north-easterly aspect. The interiors at Moment are a haven of well-being and comfort, featuring two calming color schemes for

**Price** : \$949,900  
**Building Size** : 199 sqm  
**View** : <https://www.aboveproperty.com.au/7903748>



**Matt Nicholls**  
**02 5134 3942**



**Joy Cui**  
**02 5134 3942**

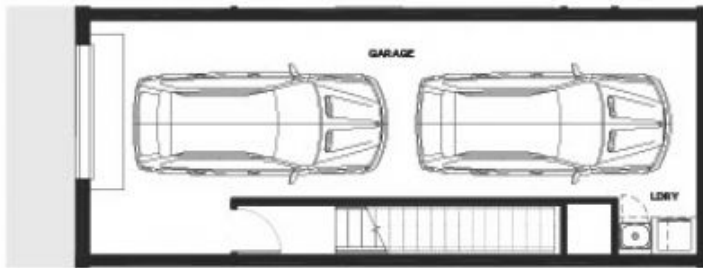
P — Pantry  
 L — Linen  
 F — Fridge  
 R — Robe



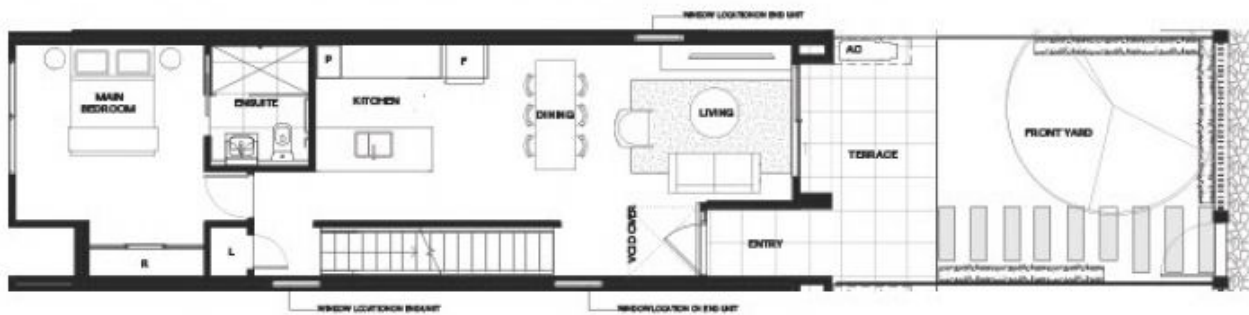
Bedrooms	3
Bathrooms	2
Car Spaces	2
Garage	45m <sup>2</sup>
Ground	62m <sup>2</sup>
Level One	36m <sup>2</sup>
Front Yard	35-65m <sup>2</sup>
Total	176-209m <sup>2</sup>



Basement



Ground



Level One

