



#### 4/ Maymuru Way Whitlam ACT

2  2  2 

Parkland on THREE SIDES with stunning views this amazing development, ACACIA offers 23 luxury garden townhouses primely positioned within the heights of Whitlam. Each of these stunning townhouses offer varying and highly unique individual floor plans to cater for a variety of lifestyle options.

These impeccably designed residences offer a range of floorplans encompassing open plan living areas along with marvellous indoor and outdoor entertaining options, all in the surrounds of public parks and open spaces - no neighbouring development .

Acacia celebrates interiors and colour schemes which are light and warm, set upon an inviting palette that complements the contemporary features.

**Price** : \$799,900  
**Building Size** : 98 sqm  
**View** : <https://www.aboveproperty.com.au/7903259>



**Matt Nicholls**  
02 5134 3942



**Joy Cui**  
02 5134 3942

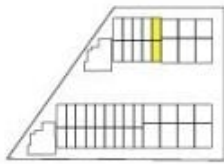
# ACACIA

WHITLAM

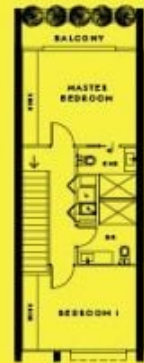
## UNIT 4

2	BEDROOM
2	BATHROOM
1	LIVING ROOM
1	DINING ROOM
1	CAR GARAGE
1	TERRACE

50sqm	GROUND FLOOR LIVING
21sqm	TERRACE
32sqm	COURTYARDS
48sqm	UPPER FLOOR LIVING
7sqm	BALCONY
22sqm	GARAGE



DISCLAIMER: This document is supplied solely for the purpose of providing an indicative floor plan of the proposed development. It is not intended to be used for any other purpose.



GROUND FLOOR

UPPER FLOOR